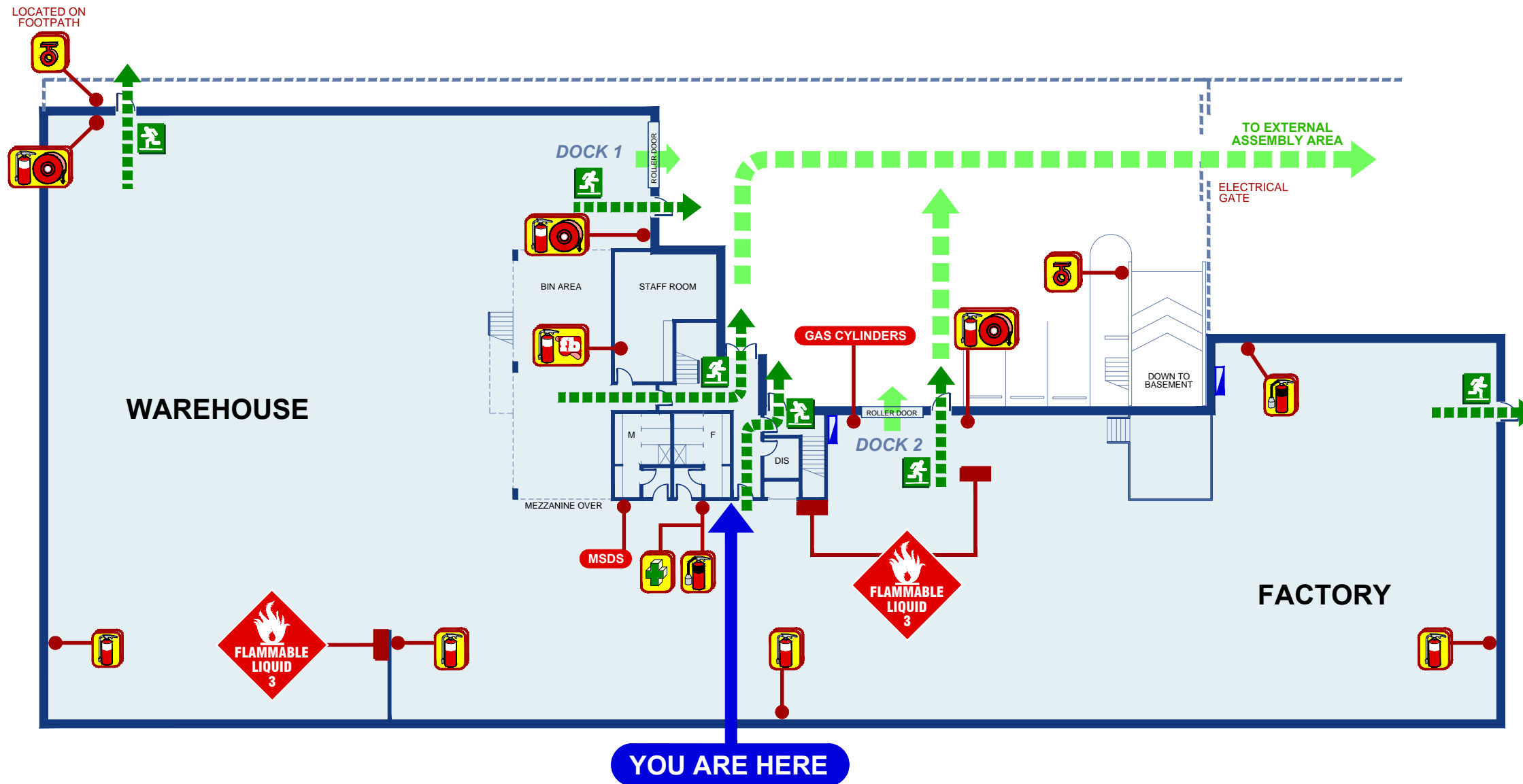


# EVACUATION DIAGRAM

VICTOR FOOTWEAR - 15 GEORGE YOUNG ST, AUBURN NSW 2144



## GROUND FLOOR

### LEGEND

- |                       |               |                             |                  |
|-----------------------|---------------|-----------------------------|------------------|
| CO2 FIRE EXTINGUISHER | FIRE BLANKET  | FIRE HOSE REEL              | ELECTRICAL PANEL |
| DCP FIRE EXTINGUISHER | FIRE HYDRANTS | MATERIAL SAFETY DATA SHEETS | EGRESS ROUTE     |

### FIRE EMERGENCY

- R** REMOVE PEOPLE FROM IMMEDIATE DANGER AREA  
Safety to self, scene and survivors in that order
- A** ALERT ALL OCCUPANTS AND RAISE AN ALARM  
DIAL 000 - Ask for the Fire Brigade
- C** CONFINE THE SMOKE / FIRE CLOSE DOORS + WINDOWS  
Restrict the spread of the fire, attempt to extinguish the fire if trained and if safe to do so.
- E** EVACUATE TO A SAFE AREA AND WAIT FOR ASSISTANCE  
Evacuate the building via the nearest safe exit door. Once out stay out and wait for assistance from the responding emergency services.

